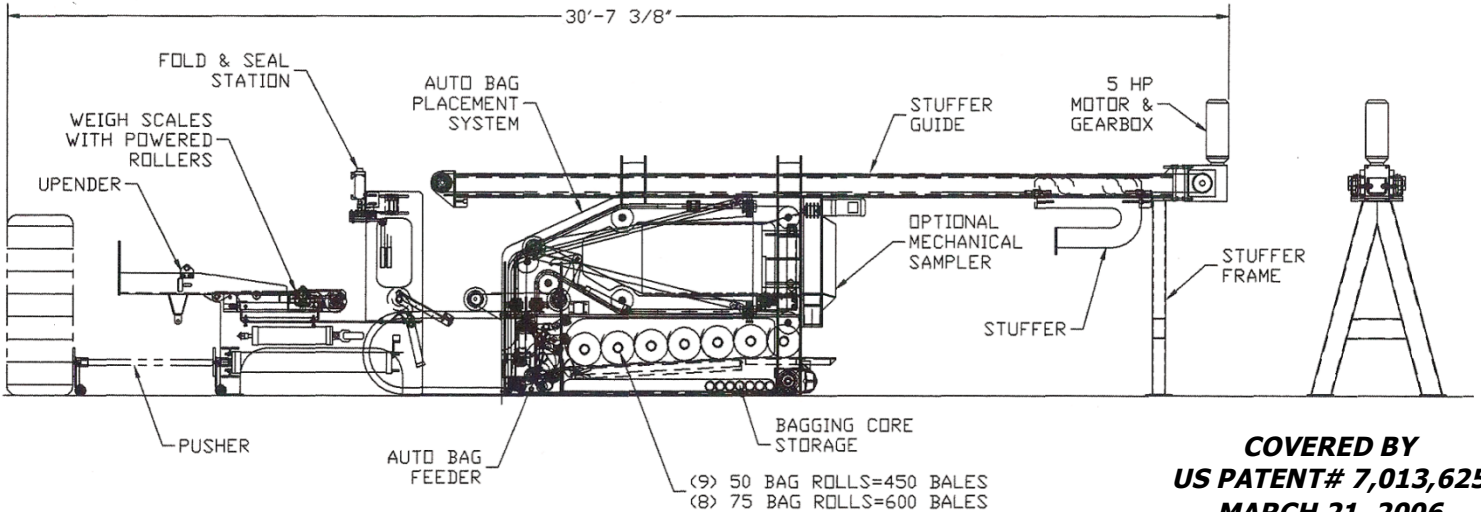


SUPER BAGGER

"Labor Savings Devices"

RATED @ 60 BALES PER HOUR (MINIMUM)



FEATURES:

- 60-80 BPH production rate
- Single Operator
- Fully Automatic System (continuous **NON-STOP** operation)
 - Unrolls bags and places them over chute
 - Bags, folds, seals, weighs, upends and accumulates bales
 - Stores up to 600 bags
- Uses Standard Polyethylene bags available from any supplier
- Stuffer with (2) #80 pull chains & 5 HP drive motor
- Variable frequency drives for optimum performance
- Touch screen control station with modem
- Optional Mechanical Sampler available
- Tech Support
- Covered by 12 month warranty

MFG BY COTTON MACHINE WORKS, LLC.

TEL (229)-273-1374 FAX (229) 273-4343

E-MAIL: c990@bellsouth.net

www.cottonmachineworks.com