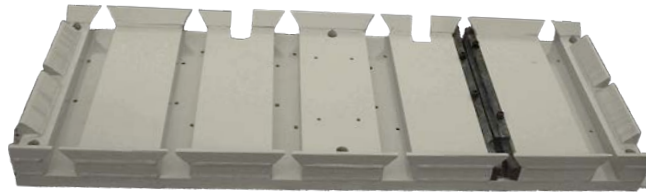


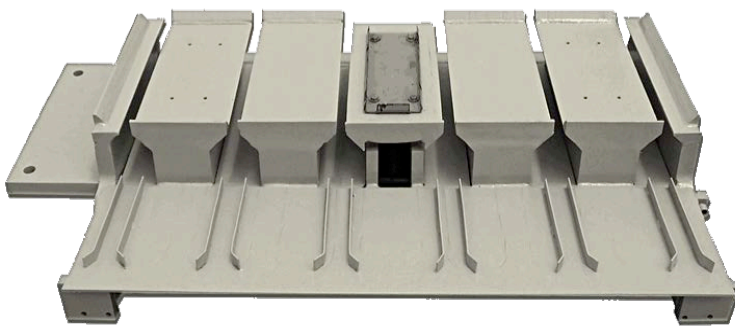
# 6 TIE PLATEN CONVERSION KITS



**CONTINENTAL BESPRESS LOWER PLATEN & UPPER PLATEN**



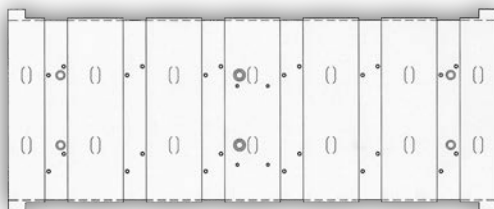
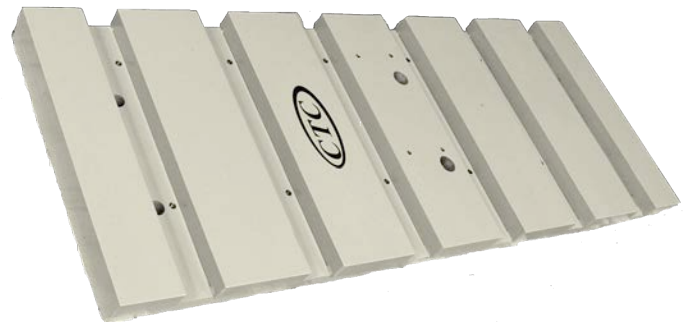
**LUMMUS, LIFTBOX, GIN DOORLESS & PREMIER**



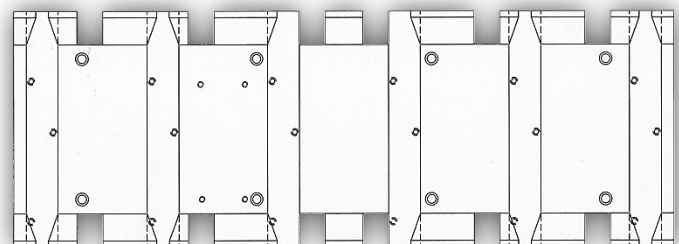
**FISHBURNE LOWER PLATEN & UPPER PLATEN**



**CONTINENTAL 730 LOWER PLATEN & UPPER PLATEN**



**CONTINENTAL 730 & 800  
UPPER & LOWER PLATEN**



**CONTINENTAL 9500 UPPER PLATEN**

**CTC Parts for the Bespress are dimensionally interchangeable & the strongest money can buy!**

# CTC DESIGN, INC.

**Now is the time to consider changing from 8 wire ties to a CTC 6-Tie System.**

**According to a major supplier of wire tires, the current savings is 45¢ per bale.**

**Together with the labor savings generated by reducing manpower at the press, this will produce a rapid payback.**

**Please review the chart below for various scenarios showing the breakdown of savings.**

CONVERTING FROM 8 WIRE TO CTC 6 TIE SYSTEM				
	BPH	BALES PER YEAR	TOTAL HRS	TOTAL DAYS
SCENARIO 1	20.00	20,000.00	1,000.00	42
SCENARIO 2	30.00	30,000.00	1,000.00	42
BREAKDOWN				
WIRE SAVINGS	WIRE SAVINGS PER BALE	BALES PER YEAR	TOTAL WIRE SAVINGS	
SCENARIO 1	\$0.45	20,000.00	\$9,000.00	
SCENARIO 2	\$0.45	30,000.00	\$13,500.00	
LABOR SAVINGS	TOTAL HOURS	2 LABORS @ \$10 HOUR	TOTAL LABOR SAVINGS	
SCENARIO 1	1,000.00	\$20.00	\$20,000.00	
SCENARIO 2	1,000.00	\$20.00	\$20,000.00	
TOTAL SAVINGS				
	WIRE SAVINGS	LABOR SAVINGS	TOTAL SAVINGS	
SCENARIO 1	\$9,000.00	\$20,000.00	\$29,000.00	
SCENARIO 2	\$13,500.00	\$20,000.00	\$33,500.00	

**Mailing**  
P.O. Box 4211  
Cordele, GA 31010

Tel: 229-273-1374  
Fax: 229-273-4343  
<http://www.ctcdesigninc.com/>

**Shipping**  
106 N. 7th St.  
Cordele, GA 31015