



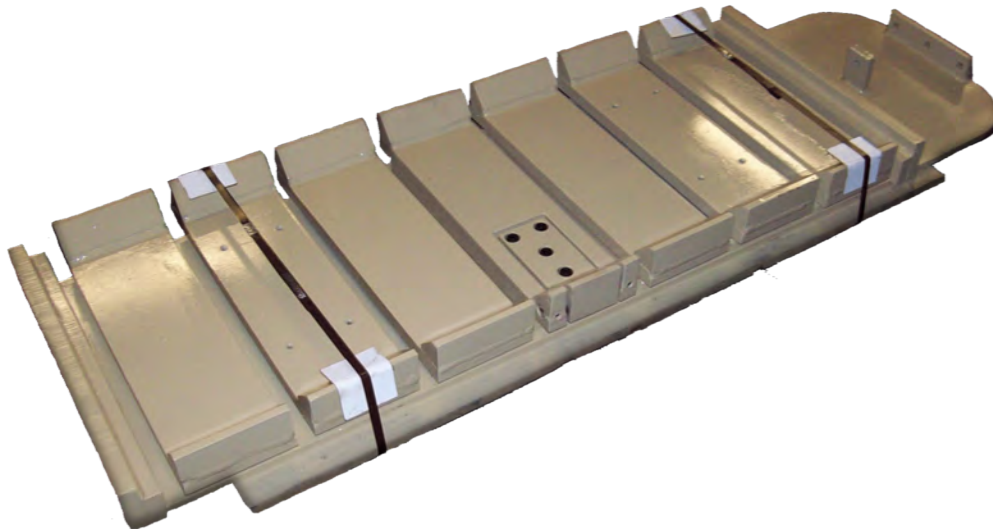
*"Labor Savings Devices"*

# Model BPRLP

*BESPRESS REPLACEMENT LOWER PLATEN*

## To Fit the Continental BesPress

---



### **ADVANTAGES:**

- *Exact dimensional replacement*
- *Bottom plate made from T-1 steel*
- *6 or 8 Tie Platens*
- *Can be supplied with CTC 4-bolt hinge block and bale ejector*
- *No cast steel parts that crack*
- *Made from certified U.S. high strength steel*
- *Covered by full one year warranty*



**DEPENDABLE MACHINE DESIGNS**

**(229)-273-1374 FAX (229) 273-4343**

**E-MAIL: c990@bellsouth.net**

**www.ctcdesigninc.com**

**REV: 08252015**