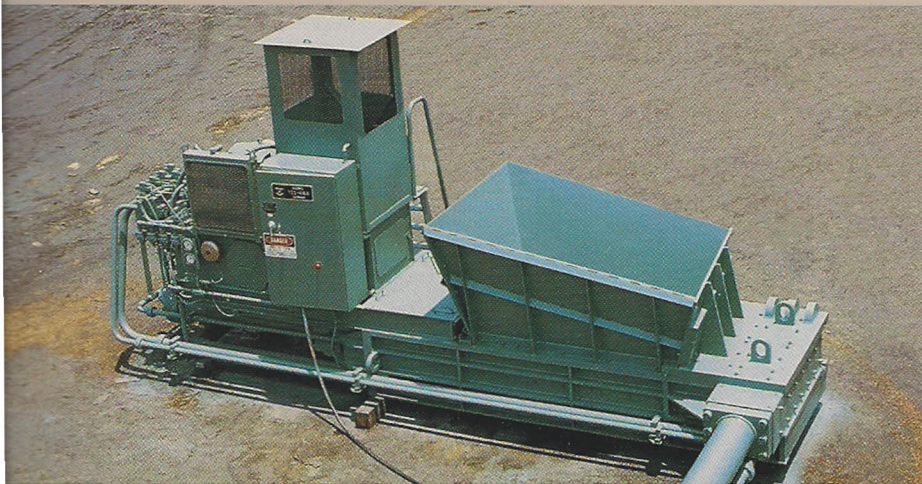


HARRIS TCS-416A AND TCS-416A-P BALERS

SMALL BUT VERSATILE BALERS



The TCS-416A is a two-compression system baler designed to process factory clips and skeletons, loose steel sheet, industrial sheet, copper wire and sheet, soft alloys of stainless steel, low alloy aluminum sheet, shapes and wire. It also handles automobile parts.



The TCS-416A-P shares the same features but is built as a portable model with its own power source. A convenient, telescoping side compression cylinder slides into a locked position for travel, permitting the unit to be towed.

Both units produce 55 to 65 bales per hour at a bale size of 16" × 16" × V (.4 m × .4 m × V).