

FISHBURNE REPLACEMENT PARTS & UPGRADES



**LATCH
BAR**



**INSIDE LIFTING
BRACKET**



**OUTSIDE LIFTING
BRACKET**



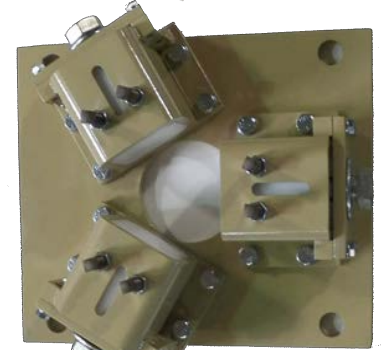
**PLATEN
HOOK**



★ **ELECTRIC TURNING KIT**



★ **PLATEN JACK CYLINDERS**



★ **TRAMPER GUIDE**



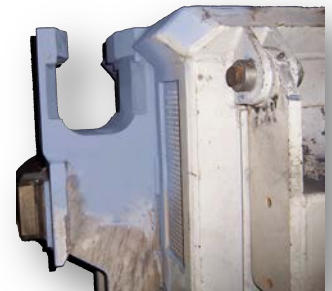
**REPLACEMENT SYSTEM
FOR SPRING WASHERS**



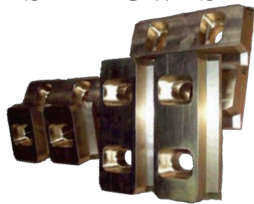
**LATCH BAR
BRACKET**



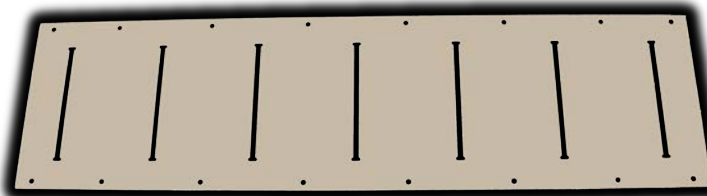
**BOOSTER
PUMP**



BOX HOOK



BRONZE BOX GUIDE



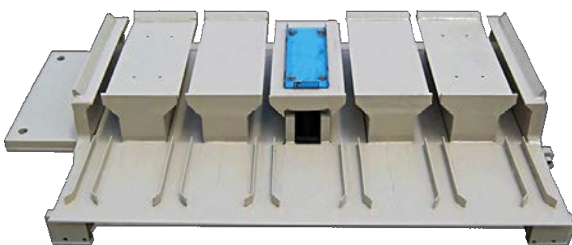
**DOG DE-BOUNCE PADS
WITH VINYL LINER**



**PISTON PUMP SPACER
WITH 2-SIDED SEAL**



SAMPLE CUTTER



6 TIE LOWER PLATEN CONVERSION



CAR-LOKER BAR



6 TIE FOLLOW BLOCK CONVERSION

CTC DESIGN, INC.

PRODUCT LINE

NEWEST ADDITIONS ★

- *6 Wire Conversion Upper & Lower Platen*
- *Pusher Wear Bars*
- *Pusher Guides*
- *Pusher Cylinder Rod Glands*
- *Tramper Valves*
- *Tramper Pump*
- *Tramper Guide Rods*
- *Tramper Assembly*
- *Tramper Cylinder*
- *Tramper Pump*
- *Pressure Transducers*
- *Piston Pump*
- *Vane Pump*
- *Lint Gate*
- *Gate Guides*
- *Follow Block Guides*
- *Pressure Switches*
- *Guide Rod Bushings*
- *De-Bounce Pads*
- *Hook Springs*
- *Hook Pins*
- *Tramper Cylinder Repair*
- *Hydraulic Cylinders*
- *Bronze Box Guides*
- *Intank Return Line Filters*
- *Deflectors for Follow Blocks*
- *Tramper Guide (CTC Design) ★*
- *Charge Box Perforated Walls*
- *Replacement System for Spring Washers*
- *Lift Box Repair*
- *Lower Platen Assy Repair*
- *Tramper Foot Repair*
- *K Prene Washers*
- *Lifting Hook Plates*
- *Latch Bar*
- *Latch Bar Brackets*
- *Platen Hooks*
- *Ram Piping Kit*
- *Check Valves*
- *Cover Seal Kits*
- *Sample Cutters*
- *Filter Elements*
- *Box Rod (High Strength)*
- *Lifting Disc (High Strength)*
- *Lifting Brackets (High Strength)*
- *Bale Ejector Seal Kits*
- *Platen Jack Seal Kits*
- *Platen Jack Cylinder (CTC Design) ★*
- *Piston Seal Kits*
- *Car-Loker & Parts*
- *Ram Packing Kit*
- *Hydraulic Turning Motor*
- *Electric Turning Motor Kit (CTC Design) ★*
- *Bale Ejector Pin*
- *Safety Switches*
- *Booster Pump*

PARTS REPAIRS UPGRADES
MACHINERY AUTOMIZATION

FOR

**FISHBURNE CB-400 ~ CONTINENTAL BESPRESS
CONTINENTAL MODEL 730, 800 & 950 ~ LUMMUS PREMIRE
LUMMUS GIN DOR-LESS ~ LUMMUS LIFT BOX ~ ARMA FB-400**

Mailing

P.O. Box 4211
Cordele, GA 31015

Tel: 229-273-1374

Fax: 229-273-4343

<http://www.ctcdesigninc.com>

Shipping

106 N. 7th St.
Cordele, GA 31015