



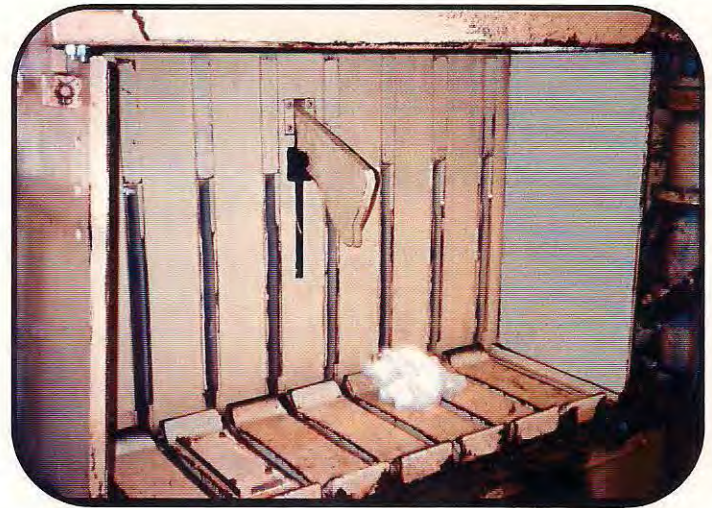
# DESIGN, INC.

## Introduces Its Newest Product Model CBP6S Return Chute System To Fit The Continental BesPress

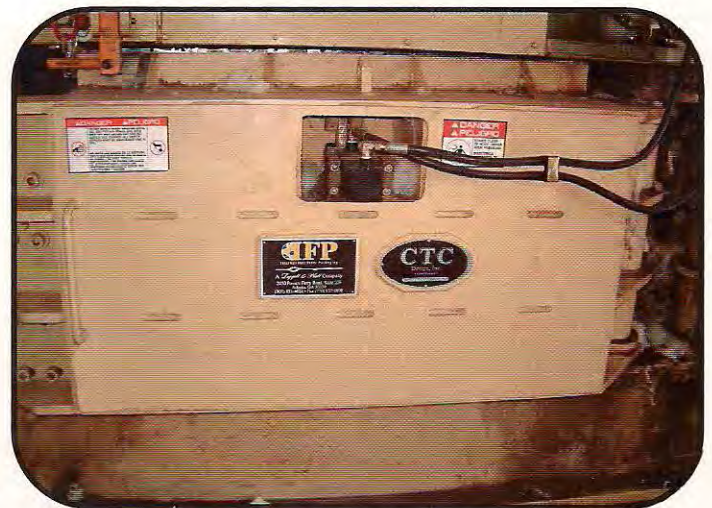
### FEATURES:

- *Eliminates up to 2 men at the press (depending on production rate); reduces tying time to 15 seconds and puts money in your pocket year after year.*
- *Hydraulic Bale Ejector is mounted inside of door and is powered by existing door jack pump. No additional hydraulic pump unit is required.*
- *Chuted door is powered open and closed by existing door jacks which reduces manpower.*
- *Includes: (2) Doors with internal return chutes for wire ties and hydraulic bale ejectors, (1) bolt-on follow block face plate with Car-Loker bars installed, (2) sets of platen bars-six wire models only, (2) door stop assemblies, (1) set of bale indentation bars, (2) door roller ramps, (1) set of hydraulic valves, hoses and fittings required for hook-up.*
- *Options: (6) or (8) tie chute systems, left or right hand doors.*
- *Strong, Durable Gin-worthy construction.*
- *Easy & Quick to install, requires some field wiring and welding.*
- *8-10 weeks delivery for standard models!*
- *Covered by full one year warranty.*

Inside View



Outside View



**DEPENDABLE MACHINE DESIGNS FOR OVER 32 YEARS**  
**TEL (229)-273-1374 FAX (229) 273-4343**  
**E-MAIL: c990@bellsouth.net**  
**www.ctcdesigninc.com**